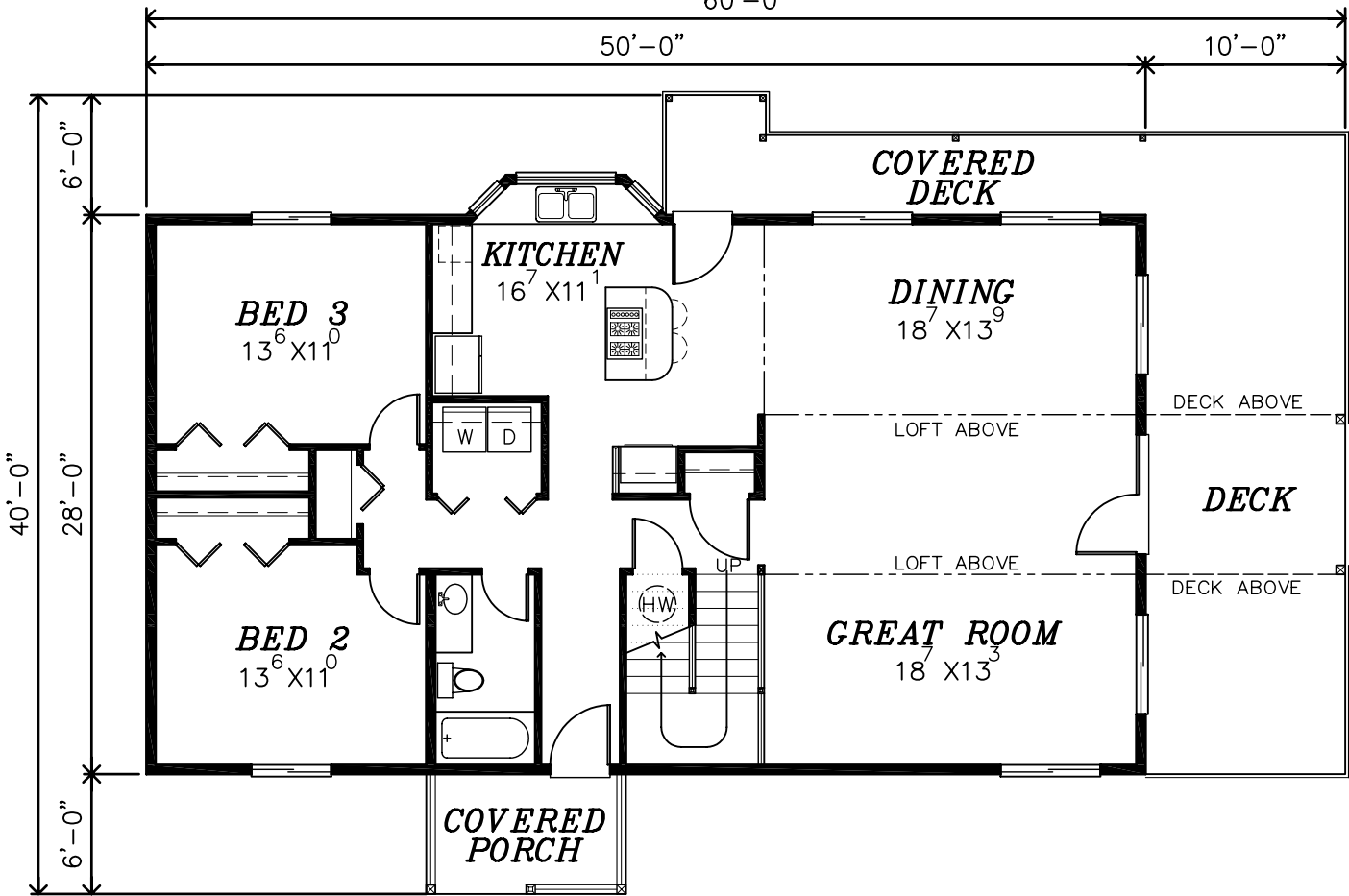


*FRONT ELEVATION*

60'-0"



*MAIN FLOOR PLAN*

1,416 SQ.FT.

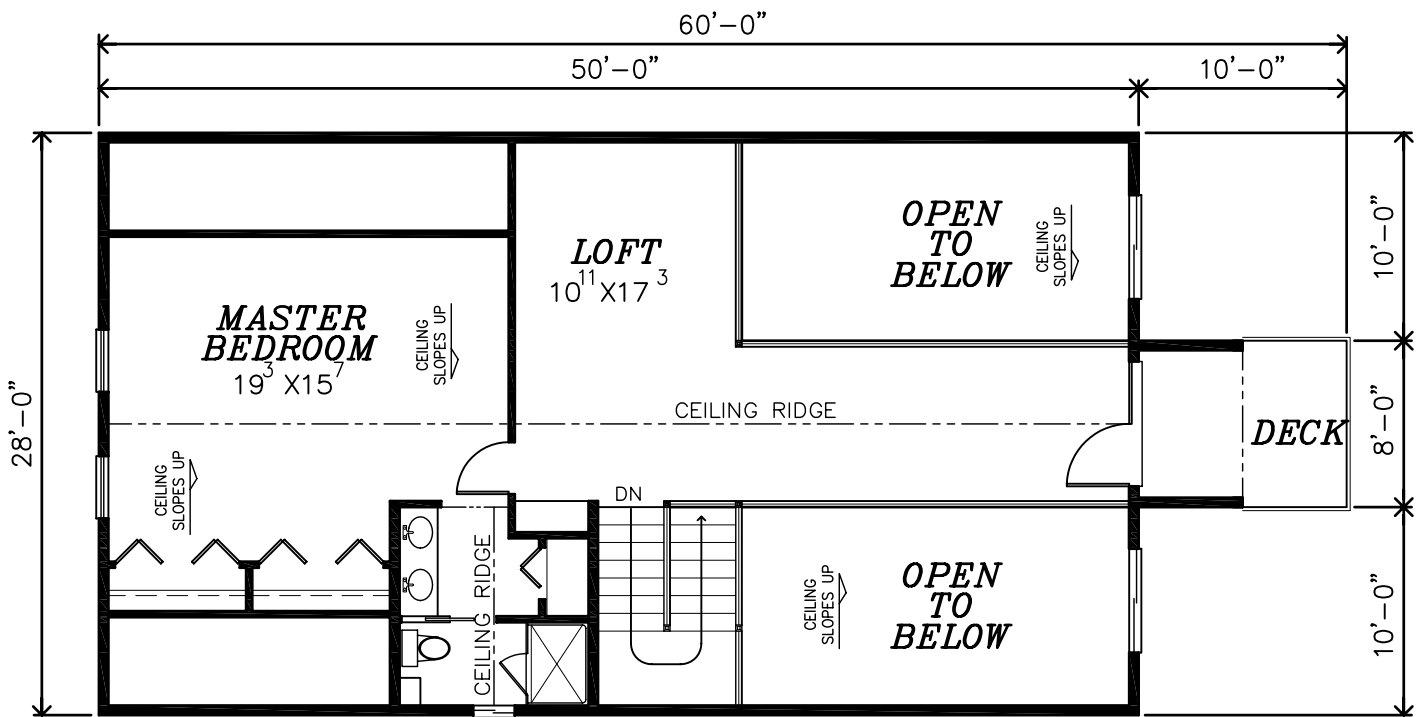
*Tahoe Pines*

PLAN No. 2400  
TOTAL SQ.FT. 2,206



**Featuring "Easy-Panel Wall System"**

887 N.W. STATE AVE. P.O. BOX 480  
CHEHALIS, WA. 98532-0480  
(360) 748-3351 (800) 752-0500



**UPPER FLOOR PLAN**  
790 SQ.FT.

*Tahoe Pines*

PLAN No. 2400  
TOTAL SQ.FT. 2,206



**Featuring "Easy-Panel Wall System"**

887 N.W. STATE AVE. P.O. BOX 480  
CHEHALIS, WA. 98532-0480  
(360) 748-3351 (800) 752-0500